

PRODUCT SHEET

Android Display

19inch Stretched Wide Screen Android - 5.1

ArtNr: EL-1902AIO-WS

MAIN FEATURES:

- AutoStart by plug in power-adapter
- LCD panel 1920 x 360 pixels
- Non Touch
- Rooted Android 5.1 / RK3288, Octacore Cortex
- Internet access by WIFI /LAN (opt. 3G)
- 3.5mm Jack output
- Metal Housing
- Power adapter with 3meter cable
- Usage up to 24 hours per day
- Wall mounting

MAIN PURPOSE:

- Digital Signage Display
- Advertisement Display
- Built-in ShopDisplays
- Kiosk Display
- CounterDisplay

USAGE:

This Android Display can be used in a commercial environment. The Display has Rooted Android 5.1 operating. This professional display can be used for several solutions to inform / advise people in an attractive way.

SIGNAGE SOFTWARE:

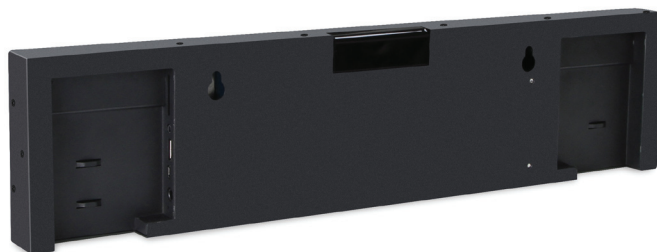
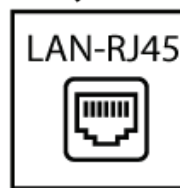
We can provide several kinds of software apps to play your content, remotely controlled, like our "Signage App: control content by f.i. Dropbox and "SbEND signage.

OPTIONAL:

- We can install your software on the devices for larger order quantities.
- Internal Memory can be upgraded.
- Similar sizes available: 21 / 24 / 28 / 37inch



Internet access by:



Next pages: technical specs and drawing

PRODUCT SHEET

Android Display

19inch Stretched Wide Screen Android - 5.1

ArtNr: EL-1902AIO-WS

SPECIFICATIONS:

System	CPU	Quad Core Cortex A17, 1.8G, RK3288
	RAM	2GB
	Internal Memory	16GB
	Operation System	Android 5.1
Display	Panel	19inch
	Resolution	1920*360
	Active Area	476.64(H) x 89.37(V)
	Viewing Angle	89/89/89/89(L/R/U/D)
	Display mode	Normally black, IPS
	Contrast ratio	1200
	Luminance	250cd/m2 type
	Aspect Ratio	Bar screen
Network	WiFi	802.11b/g/n
	Ethernet	10M/100M ethernet
	Bluetooth	Bluetooth 4.0
Interface	USB Host x 3	USB 2.0
	USB OTG	USB OTG
	SD Card slot	SD/MMC card slot
	Earphone	3.5mm earphone
	Power Jack	DC input
	RJ45	Ethernet
Media plays	Video format	MPEG-1, MPEG-2, MPEG-4, H.263, H264, VC1, RV etc
	Photo	jpeg
Other	VESA	Wall mounting
	Language	Multi-language
	Working temp	0-40degree
	Power consumption	24W
	Certificates	
Acessories	Adapter	Adapter, 12V / 3A
	User manuel	yes

Unit (Without packaging)			Giftbox (With Packaging)			Carton pcs/CTN		
L	W	H	L	W	H	L	W	H
494.5mm	117.4mm	30mm						
Net(kg)	1.92kg		Net(kg)			Net		
						G.W		

Next page Drawing

PRODUCT SHEET

Android Display

19inch Stretched Wide Screen Android - 5.1

ArtNr: EL-1902AIO-WS

DRAWINGS

