

PRODUCT SHEET

13.3inch MonitorScreen OpenFrame

ArtNr: AC-1330F-IPS

MonitorScreen OpenFrame

MAIN FEATURES:

- AutoStart by plug in power-adapter
- 13.3 inch LCD panel 1600*900 pixels
- HDMI In – Monitor Function
- Plastic Housing for built-in purpose
- Internal Speakers
- 3.5mm Jack output (optional)
- Thin housing
- Power adapter with 2.5meter cable
- Usage up to 14 hours per day
- Additional features for interactivity

MAIN PURPOSE:

- Digital Signage Display /Advertisement Display
- Built-in ShopDisplays

USAGE:

This professional Monitor has HDMI IN to connect it to an external player (Windows PC, Raspberry Pi, Android Player). You can use it as a signage screen. Show your dynamic content from your external player. If you have an “online” system on your player, you can push your content remotely to your player and send it to the screen. We can also provide with such online software system. These monitors are Auto- Power ON. The HD player can start from SD or usb. The timer function can be used for automatic On-Off.

OPTIONAL: Multi Functions

The mainboard can be turned into a multi-functionboard, several in-outputs can be added, and software can be made Tailormade. Example features:

- Trigger buttons for selection video / volume combined with LED lighting
- Output for LED lightning 5/12V
- Motion Sensor / Tilt-up light Sensor
- Multiple Audio Outputs for speakers & headphones
- Input Audio for Mobile phone / iPod (auto-sensing)
- Touchscreen



Next pages:
Additional features
technical specs and drawing

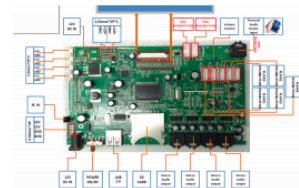
13.3inch MonitorScreen OpenFrame

ArtNr: AC-1330F-IPS

Additional Features for our MediaScreens with a Multi-Function board

We can add extra features to the Multi-functionboard which are inside some of our Mediascreens. See the features below. Our engineers can develop the function custommade against your needs.

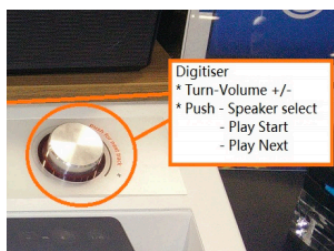
Very usefull for Instore Display Building!



TRIGGER BUTTONS for activate sound / video / volume / light



external press-buttons
+ external cable



external Press and Turn button
+ external cable



capacitive touch buttons + external cables
(can be put under 3mm glass plate)



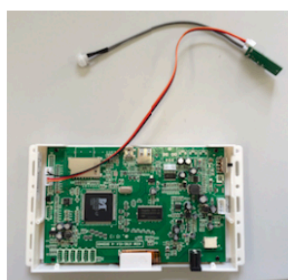
LED Light Pads



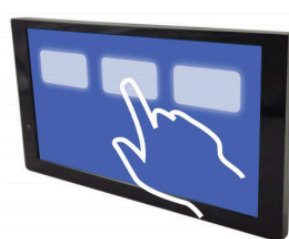
LED Light Strips



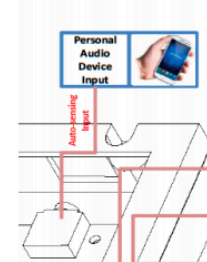
Customized Membrane
press touch pad



Motion sensor



TouchScreen



Input Jack for Mobile Phone Sound



All kind of brackets



External Speakers



External 8D-cell batterybox

Next page: Technical specs & Drawing

13.3inch MonitorScreen OpenFrame

ArtNr: AC-1330F-IPS

TECHNICAL SPECIFICATIONS

Display	Panel	13.3inch LCD Media Player
	Shell	Open Frame - for built-in purpose
	Resolution	1600*900
	Contrast ratio	500:1
	Brightness	300cd/m ²
	Viewing angles:	80/80/80/80 (L/R/U/D)
	Aspect Ratio	16:9
Interface	Card slot	SD Card
	USB Host	USB Host 2.0
	HDMI	HDMI Input
	Power Jack	DC 12V/1.5A power input
	Head phone	3.5mm Jack output (optional)
Sound System	Speaker	2x2W/8Ω internal speakers
VIDEO	Video format	1) AVI (XVID. H.264)
		2) MPEG-1 H.264
		3) MPEG 2 H.264
		4) MOV (XVID. H.264)
AUDIO	Audio format	MP3
PHOTO	Photo	JPEG
	Other	Automatic slide show playback Playback speed adjustment interval setup
Standard Functions	HDMI In	HDMI In - Monitor Function
	Loop	Continuous loop demo video
Optional functions	Trigger Buttons	Push- and Touchbuttons, Press&Turn button
	Sensors	Motion sensor or Lift sensor to activate videos
	Speakers	External Speakers
	Batterybox	8D-Cell Batterybox for battery operated power
	Audio out	Multiple Jacks 3.5 / Coax / Digital Sound
	Jack Input	Jack Input for mobile phone / mp3-player sound
	Software	Software adjustments for your needs
	LED	LED strips, LED light pads
	Output Voltage	(multiple) Output 12V (5V), f.i. for LED lighting
	Touchscreen	Transistive TouchScreen
Others	Accessories:	Adaptor, Remote Control
	Color:	Black Housing
	Brackets:	Optional several brackets available

13.3inch MonitorScreen OpenFrame

ArtNr: AC-133OF-IPS

DRAWING

