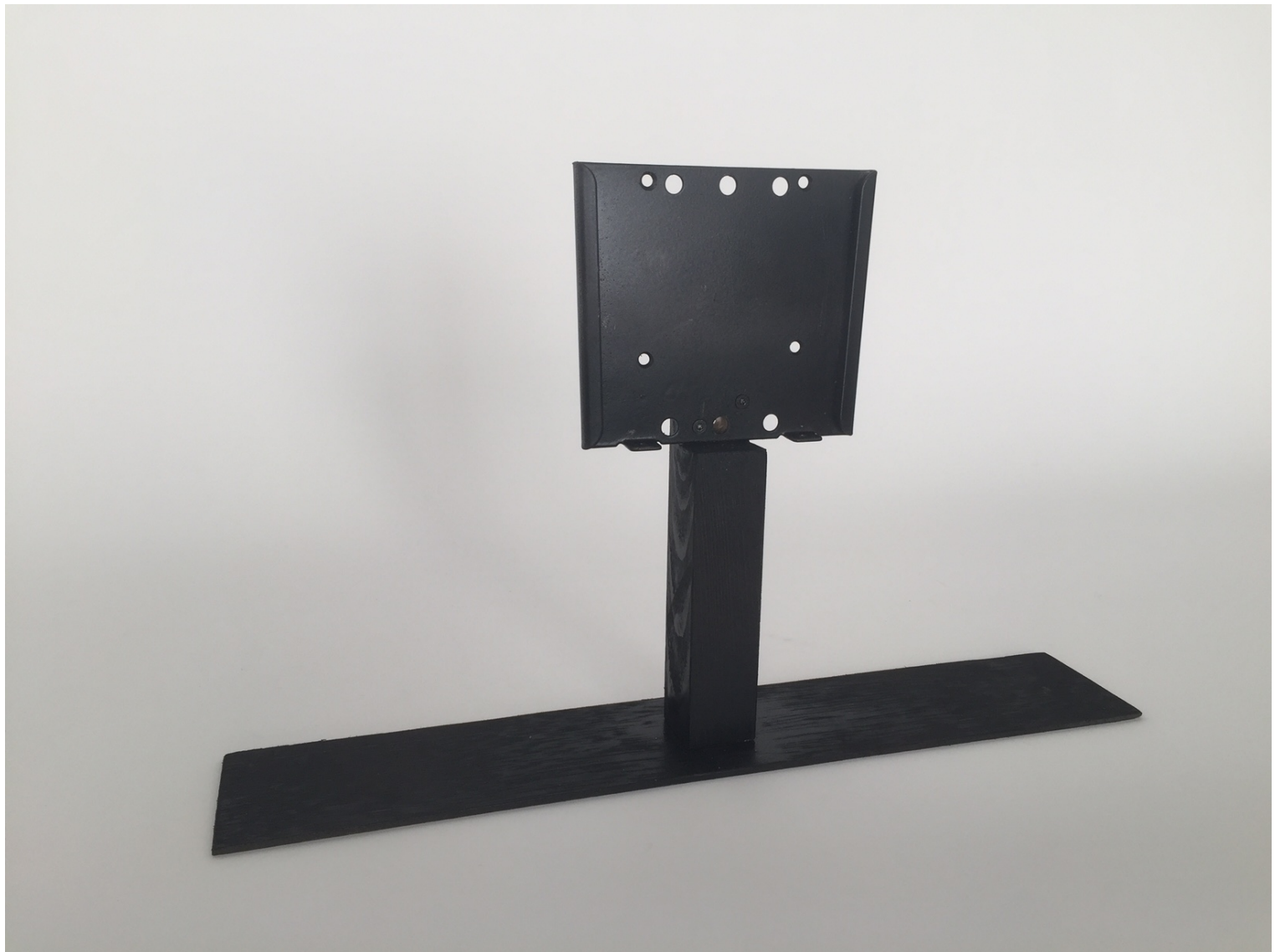


## Bracket for back-to-back 18.5inch Android





This sample model is made of metal+wood. For production the total bracket will be made from metal, with hollow stand-pole.











First screen can be attached to one part of the bracket.

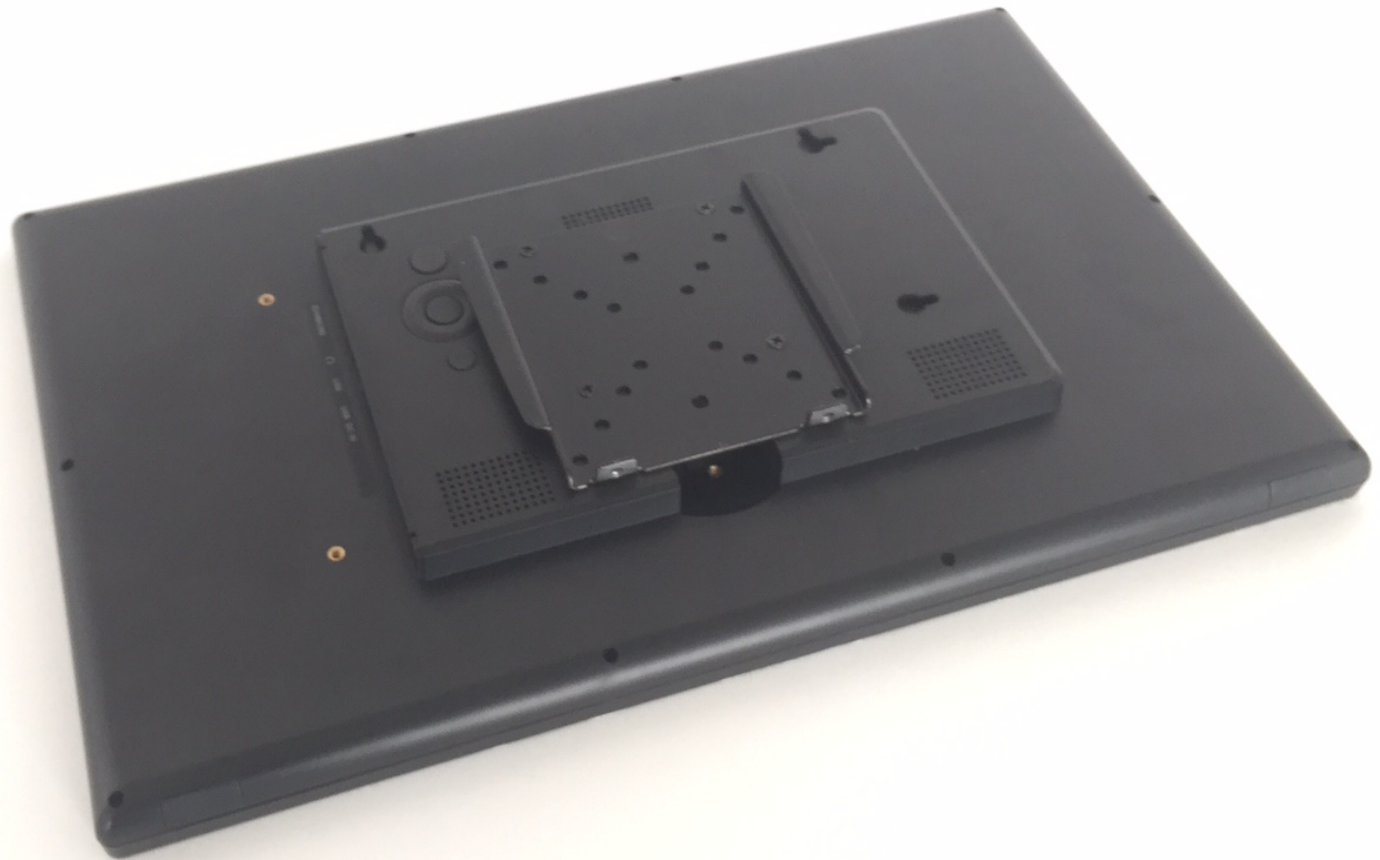






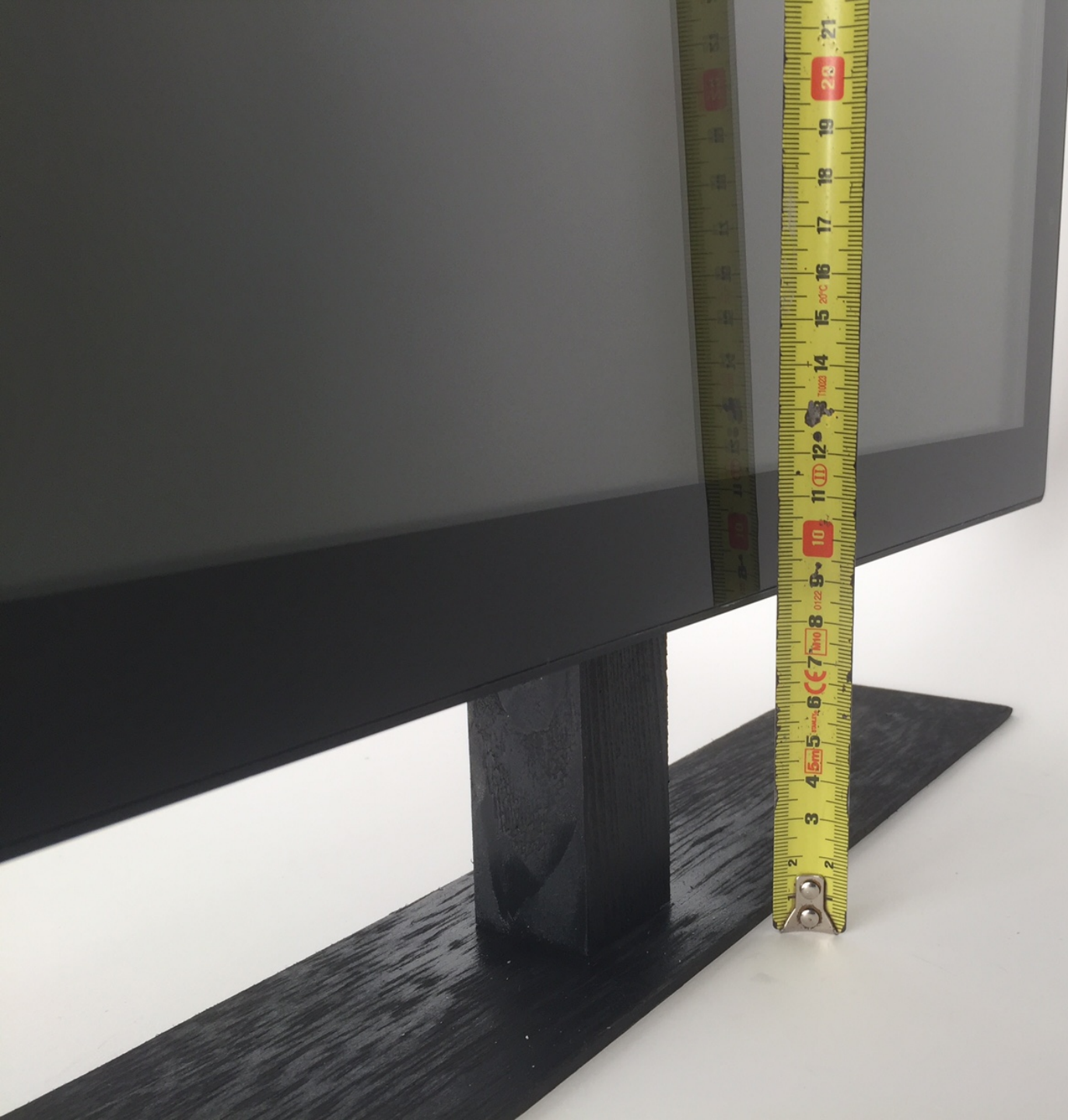


2nd screen with slider  
bracket. It can slide in the  
other part in the bracket.





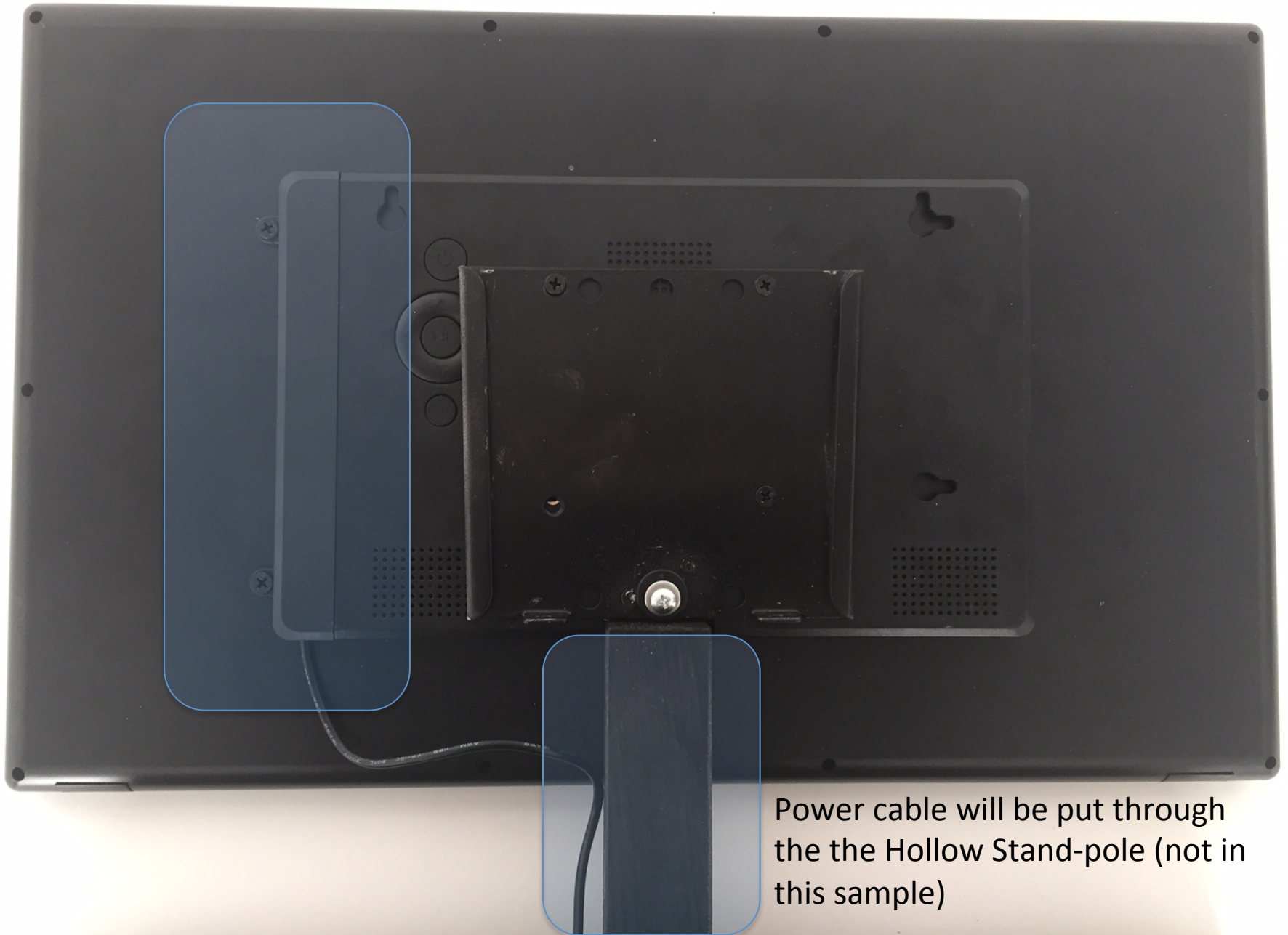
Second screen has been  
Slided into the other part of  
The bracket.







Protection cap will cover the power cable, to prevent to be plugged out



Power cable will be put through the the Hollow Stand-pole (not in this sample)

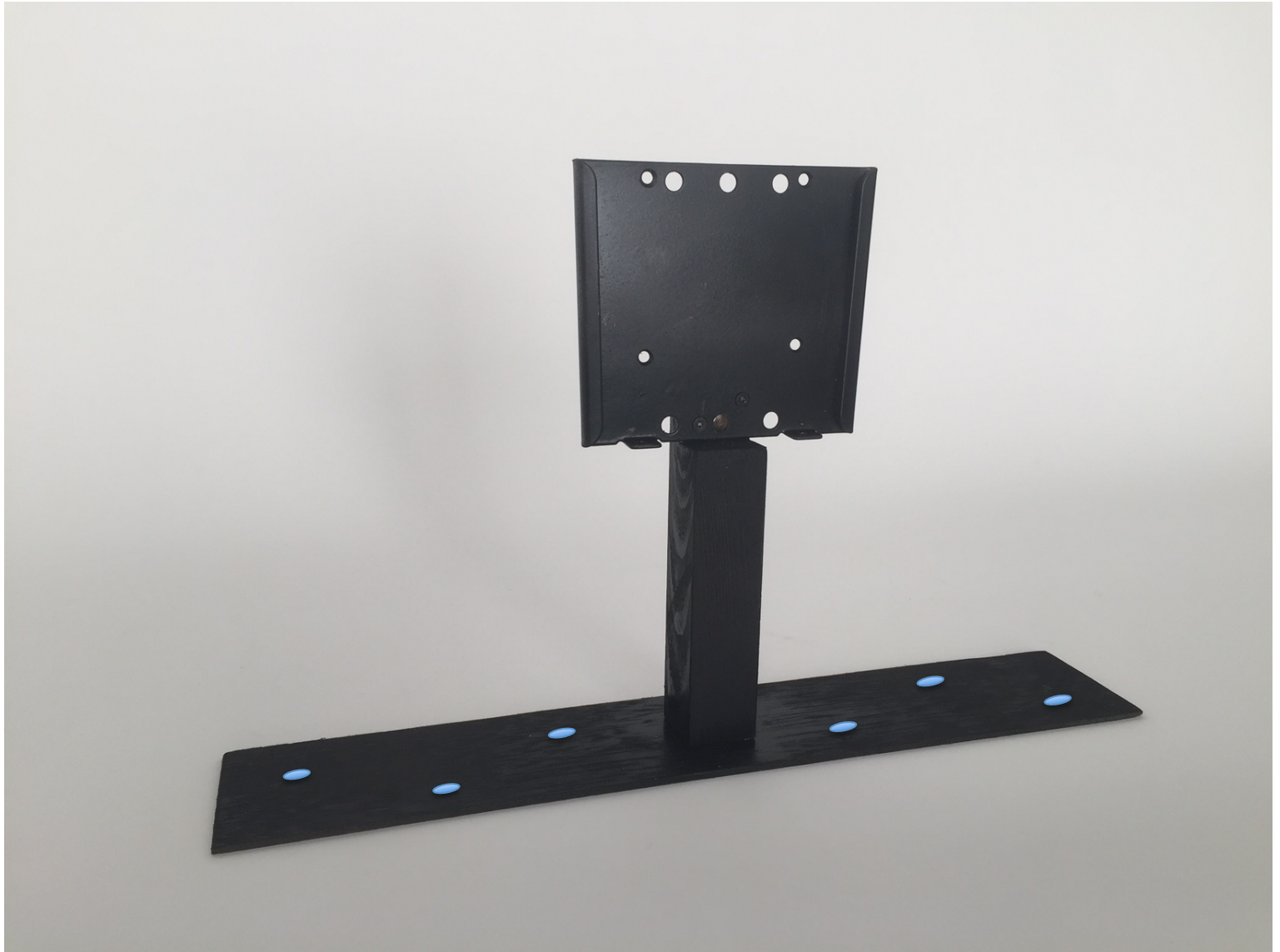




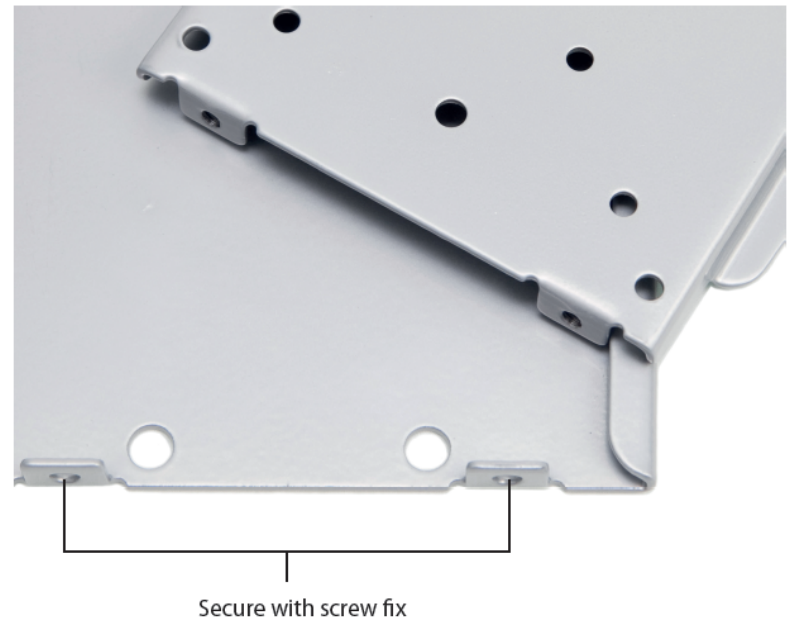
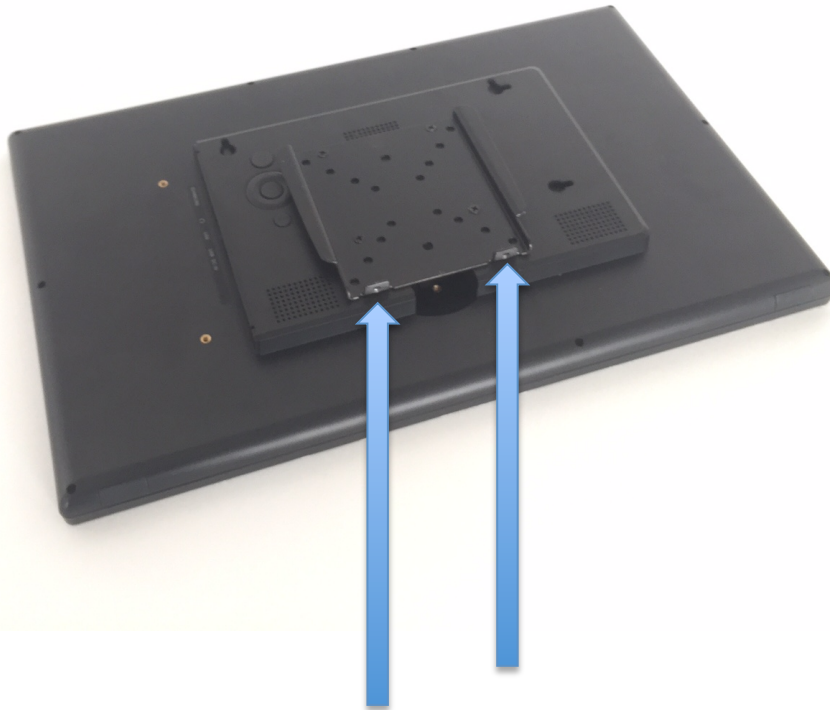




Power cable will be put inside the table-stand-pole. A hole in the table will make the power-cable “invisible”.



Fixate by screws the bracket to the table



Both brackets have at the downside screw-clip;  
You can fasten both brackets together by 2  
screws. You cannot slide off the screen (prevent it  
from stealing)