

# PRODUCT SHEET

## 7inch OpenFrame Monitor

ArtNr: AC-0700F-HDMI-IPS

OpenFrame Monitor

### MAIN FEATURES:

- AutoStart by plug in power-adapter
- HDMI input portal
- 7inch IPS-LCD panel 1024\*600 pixels
- Plastic Housing for built-in purpose
- Thin housing
- Power adapter with 2.5meter cable
- Usage up to 14 hours per day
- Optional:
  - VGA/DVI input
  - Internal HD videoplayer 1080P
  - Internal Speakers
  - 3.5mm Jack output

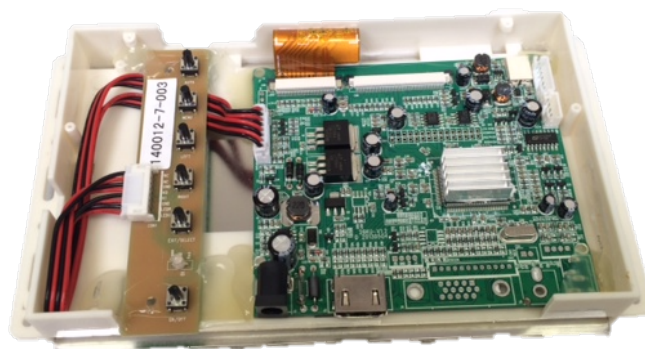


### MAIN PURPOSE:

- Connect an external player, like a PC computer or mediaplayer for f.i. Digital Signage Display /Advertisement Display
- Built-in ShopDisplays

### USAGE:

This Monitor can be easily used for built-in a display. Just connect the HDMI and play. The mainboard can optionally come with extra in-outputs for interactivity, see the options below.



### OPTIONAL: Multi Functions

The mainboard can be turned into a multi-functionboard, several in-outputs can be added, and software can be made Tailormade. Example features:

- Trigger buttons for selection video / volume combined with LED lighting
- Output for LED lightning 5/12V
- Motion Sensor / Tilt-up light Sensor
- Multiple Audio Outputs for speakers & headphones
- Input Audio for Mobile phone / iPod (auto-sensing)
- Touchscreen

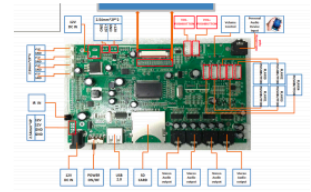
=> find more about the options below in this productsheet.



Next pages:  
additional features  
technical specs and drawing

## Additional Features for our MediaScreens with a Multi-Function board

We can add extra features to the Multi-functionboard which are inside some of our Mediascreens. See the features below. Our engineers can develop the function custommade against your needs.



Very usefull for Instore Display Building!

**TRIGGER BUTTONS** for activate sound / video / volume / light



external press-buttons  
+ external cable



external Press and Turn button  
+ external cable



capacitive touch buttons + external cables  
(can be put under 3mm glass plate)



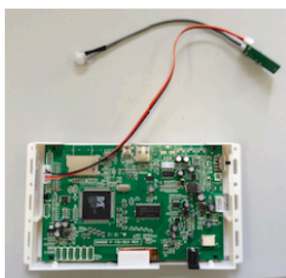
## LED Light Pads



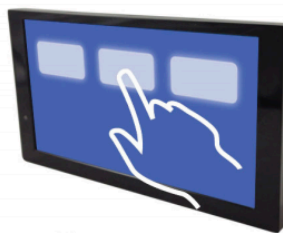
## LED Light Strips



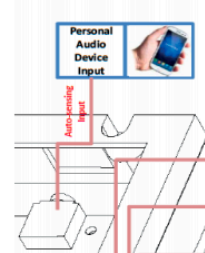
Customized Membrane  
press touch pad



### Motion sensor



## TouchScreen



### Input Jack for Mobile Phone Sound



## All kind of brackets



## External Speakers



External 8D-cell batterybox

**Next page: Technical specs & Drawing**

**PRODUCT SHEET**  
**7inch Open Frame Monitor**

OpenFrame Monitor

ArtNr: AC-0700F-HDMI-IPS

**TECHNICAL SPECIFICATIONS**

Display	Panel	7inch LCD Media Player
	Shell	Open Frame - for built-in purpose
	Resolution	1024*600
	Contrast ratio	800:1
	Brightness	250cdm <sup>2</sup>
	Viewing angles:	70/75/75/75(U/D/L/R)
	Aspect Ratio	16:9
Interface	HDMI	HDMI IN portal
	Power Jack	DC 12V/1.5A power input
	Head phone	3.5mm Jack output (optional)
Sound System	Speaker	2x2W/8Ω internal speakers (optional)
Standard Functions	AutoStart	AUTO Start
Optional functions	Trigger Buttons	Push- and Touchbuttons, Press&Turn button
	Sensors	Motion sensor or Lift sensor to activate videos
	Speakers	External Speakers
	Batterybox	8D-Cell Batterybox for battery operated power
	Audio out	Multiple Jacks 3.5 / Coax / Digital Sound
	Jack Input	Jack Input for mobile phone / mp3-player sound
	Software	Software adjustments for your needs
	LED	LED strips, LED light pads
	Output Voltage	(multiple) Output 12V (5V), f.i. for LED lighting
	Touchscreen	Transistive TouchScreen
Others	Accessories:	Power Adapter, (optional Remote Control)
	Color:	White plastic Housing

**Next page: Drawing**

PRODUCT SHEET  
**7inch Open Frame Monitor**  
ArtNr: AC-0700F-HDMI-IPS

OpenFrame Monitor

**DRAWING**

