

PRODUCT SHEET

32inch A-Board Signage Indoor

ArtNr: PL-3201AIO-A-BOARD-2

MAIN FEATURES:

- Play advertisement by video and slides
- Single mode / Split screens options: video and slides
- Scrolling message at bottom or top / Clock in top corner
- Can come in a FlightCase for easy carrying-transport.
- Easy setup; Setup straight, plug in power, autoplay.
- Resolution 1920 x 1080 pixels
- Display ratio: 9:16 / 16:9
- Visual angle: H/V 178°

OPTIONAL:

- Built in WIFI & LAN RJ45 input source
- Capacitive Touchscreen
- FlightCase for easy transportation

MAIN PURPOSE:

- Digital Signage Display
- Advertisement Display
- Kiosk Display

USAGE:

This Android Display can be used in a commercial environment. This professional display can be used for several solutions to inform / advise people in an attractive way. This model is for Indoor use only.

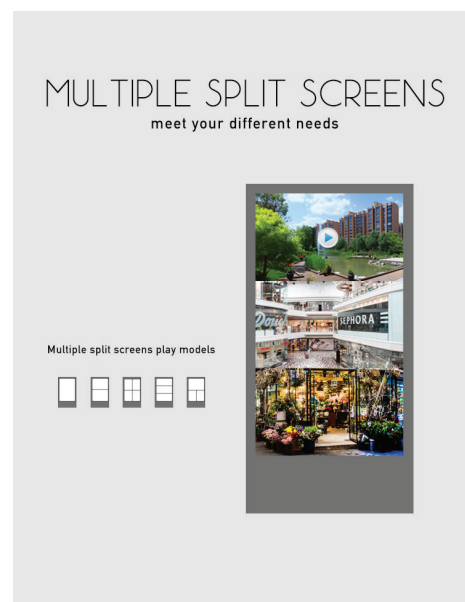
DIGITAL SIGNAGE SOFTWARE:

Standard it comes with Internal Memory to play content from (autoupdate by USB Stick). It can also come with online CMS digital signage software program. Optional we can install your digital signage software on it.

Additional:

- We can install your software on the devices for larger order quantities.
- Internal Memory can be upgraded.
- Similar sizes available: 43inch

Android A-Board



Next pages: technical specs and drawing and extra information pictures.

PRODUCT SHEET

32inch A-Board Signage Indoor

ArtNr: PL-3201AIO-A-BOARD-2

Android A-Board

SPECIFICATIONS:

Item NO.	PL-3201AIO-A-BOARD-2		Technical Spec.	System	Android 4.42
Back Light	LED Digital Signage			CPU	RK3128 4 Cores 1.2GHz
Type	Android Digital Signage			DDR	1G
Appearance	Outlook	enclosed shell, cold-roll steel sheet, aluminum alloy frame, main board cover		NAND FLASH	8G
				USB	USB2.0
	Color	Black		SD	MAX 32G
	Back Shell	Flat metal		Languages	Chinese/English/Optional
Speaker	Concealed speaker	BGM Power		8 Ω	
Structure	Functions	1、Vertical display 2、No internet connector		Speaker	2X5W
				Input/Output	1 USB2.0 1 SD
				Video	RM/RMVB, MKV, TS, FLV, AVI, VOB, MOV, WMV, MP4
				Pictures	BMP、JPEG、PNG etc.
			Rated Power	44W	
			Standby Power	≦ 1W	
			Working Voltage	100~240V 50HZ/60HZ	
Screen Spec.	Size	32''	Size/Packaging	Package	Flight Case (Optional)
	Resolution	1080X1920		Flight Case Size	910*515*135mm
	Brand	LG		Machine Size	830.8*460.6*60mm
	Display Rate	9:16		Grows Weight	25kg
	Back Light	LED		Net Weight	17.5kg
	Contract	4000:1		Remote Control	1
	Brightness	350cd/㎡		Battery	1
	React Time	6.5ms		Instruction	1
	View Area	178(H)/178(V)	Accessories	Cable	1
	Color	16.7M			
	Color Range	72%（NTSC）			
	Lifespan	50000 hours			

Note: Specification will be changed according to customers' requirements.

All rights reserved. Changes to specifications and descriptions may be made at any time without prior notice.

PRODUCT SHEET

32inch A-Board Signage Indoor

ArtNr: PL-3201AIO-A-BOARD-2

Android A-Board

ULTRATHIN AND LIGHT

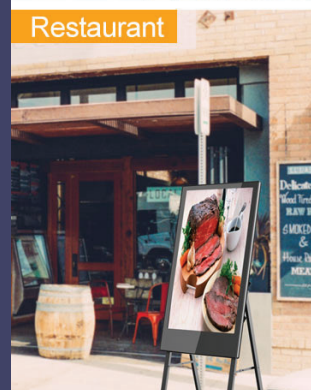
Easy to take anywhere, cost saving



Net weight: 32" 17.5KG/ 43" 23KG



APPLICATIONS



Next pages: drawing
and extra information pictures.

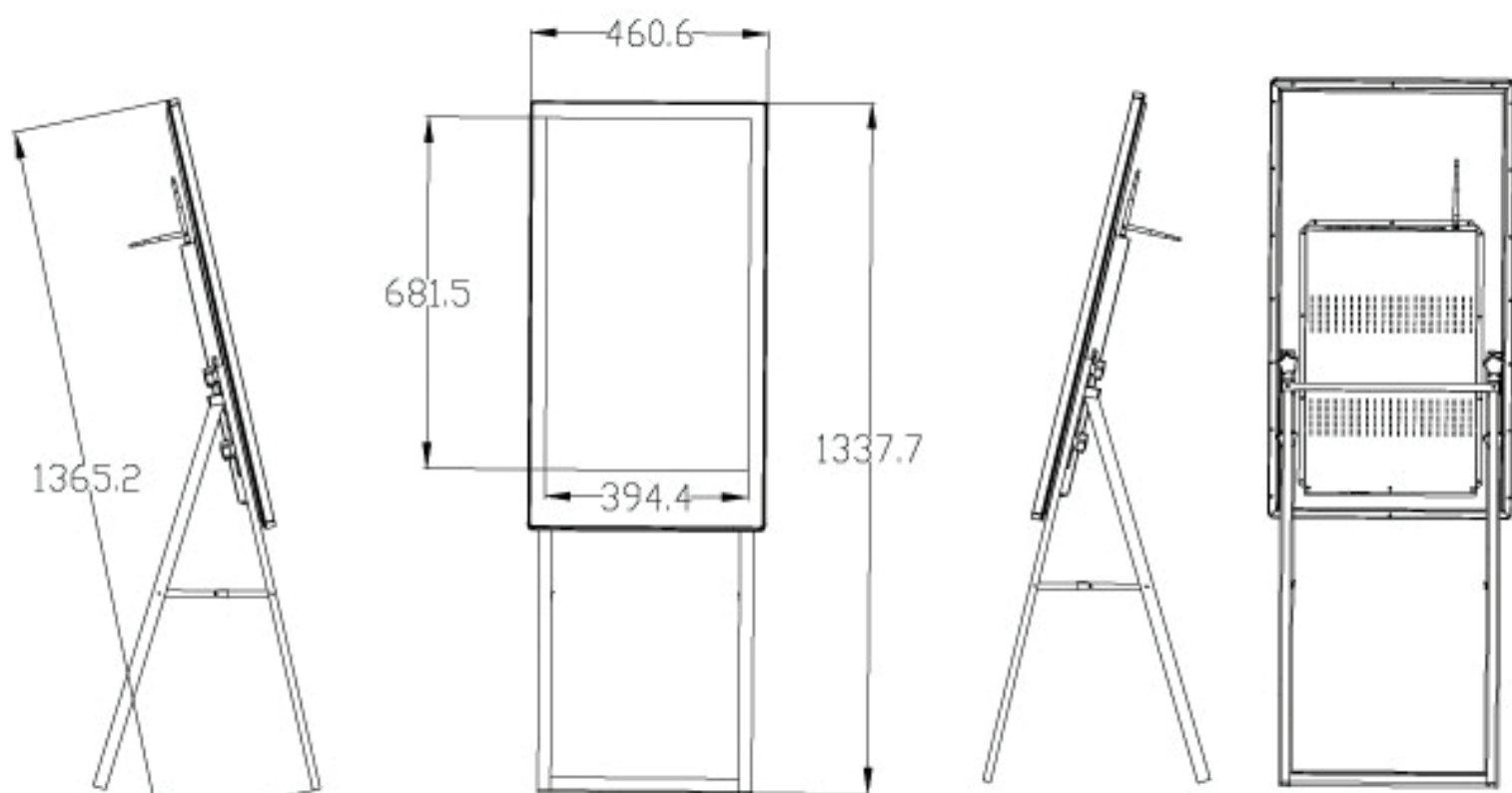
PRODUCT SHEET

32inch A-Board Signage Indoor

ArtNr: PL-3201AIO-A-BOARD-2

Android A-Board

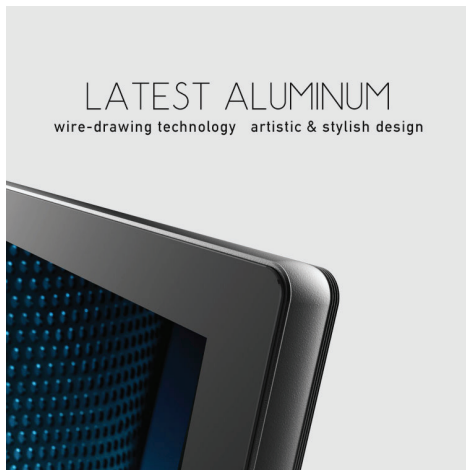
DRAWING:



PRODUCT SHEET

32inch A-Board Signage Indoor

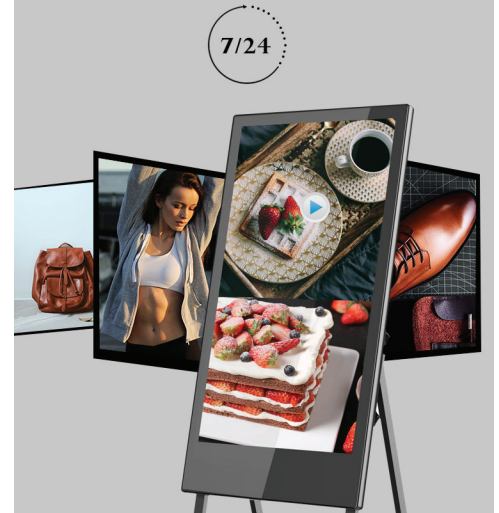
ArtNr: PL-3201AIO-A-BOARD-2



TEMPERED GLASS
anti-scratch, anti-impact



7/24 HOURS DISPLAY
stable & efficient
maximize the use & commercial value



ULTRATHIN AND LIGHT
Easy to take anywhere, cost saving



Net weight: 32" 17.5KG/ 43" 23KG



MULTI-MEDIA SUPPORT
anywhere anytime, display whatever you want



MULTI-SYSTEM SUPPORT
PC&Cell phone control system, USB/Network display function



SUPREME HD

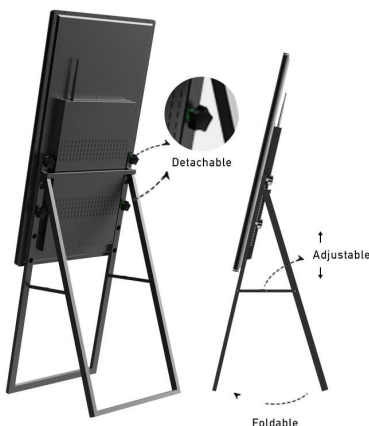
Maximum 1920*1080 resolution
TFT-LCD. Color Brightness: 16.7M



1920*1080 ↑
bring you an immersive experience

ARTISTIC & PORTABLE

Stand foldable, Stand detachable, height adjustable
meet the needs of different customers



INTELLIGENT REMOTE

Wifi version: intelligent remote control every device

