

ANDROID (non)TOUCH DISPLAYS

AVAILABLE SIZES:
15.6 - 21.5 - 24 - 32inch



RETAIL BUSINESS

Android Displays for use in a commercial environment. These displays have a rooted Android operating system and can be used for several solutions to inform and advise people in an attractive way, 24-7.

ONLINE MODELS

Often used in retail displays and built-in ShopDisplays or in Public environments.



TOUCH & PANEL

- 10 points capacitive touch
- Optional: non touch panel
- 21,5" High Resolution Panel 1920x1080 pixels
- 24-7 Usage



ANDROID CHIP & OS VERSIONS

- RK3588S2 with Android OS 13
- RK3576 with Android OS 14
- RK3568 with Android OS 14



ADDITIONAL FEATURES:

- PoE: Power over Ethernet
- NFC & RFID (optional)
- Triggering: pushbuttons, sensors
- LED light: external lightstrips

Note:

There is no signage software installed, please provide your own software or we can provide dedicated signage software.

ANDROID ROOTED

All our models have Rooted Android. The OS system can be adjusted according to your needs.

YOUR SOFTWARE

We can pre-install your software apps on the Android OS. We can also make your OS image custommade, with your startup logo.



Easy hangup system at backside (VESA Screw holes plate)



AutoStart by plug in power adapter



WiFi and LAN for internet connection (optional SIM USB dongle)

Certifications:



SOFTWARE OPTIONS

ADD: YOUR SOFTWARE

We can pre-install your software apps on the Android OS. We can also make your OS image custommade, with your startup logo.

ADD: SIGNAGE SOFTWARE

We can provide software apps on the Android OS. Find some suggestions below:

KIOWARE: Lockdown your website or your app (kiosk mode)

FULLY VIDEO: AutoStart App loop video from USB & Internal Memory

FULLY WEBSITE: Lockdown your website in full screen mode

SIGN CONTROLL: Remote controlled pushed presentations with web-based control system (CMS). Create in the CMS presentations and schedule them, online.

ROOM & DESK SHARING: Roombooking and Desk Sharing software

Optional: add external Triggers & Sensors for Video Acti-

Customized Android displays to connect triggers for video & volume activation:

- Metal or plastic pushbuttons with lightring and symbol
- Touchless sensor buttons (wave your hand above the sensor)
- RFID Sensors for "Lift and Learn"
- RFID Sensors for scanning a product with RFID sticker
- Motion detection sensors
- Light Sensors detection area



Optional: add (Interactive) LED Light strips and panels

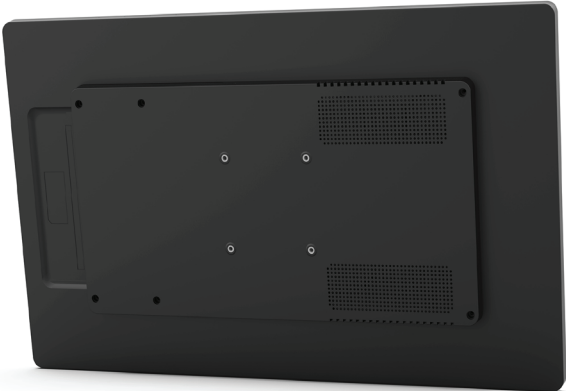
Customized Android displays to connect LED lightning:

- LED strips or LED Panel Light up your product
- Light up a product during an activated video
- Light up a brand logo in a retail display
- Different colors available

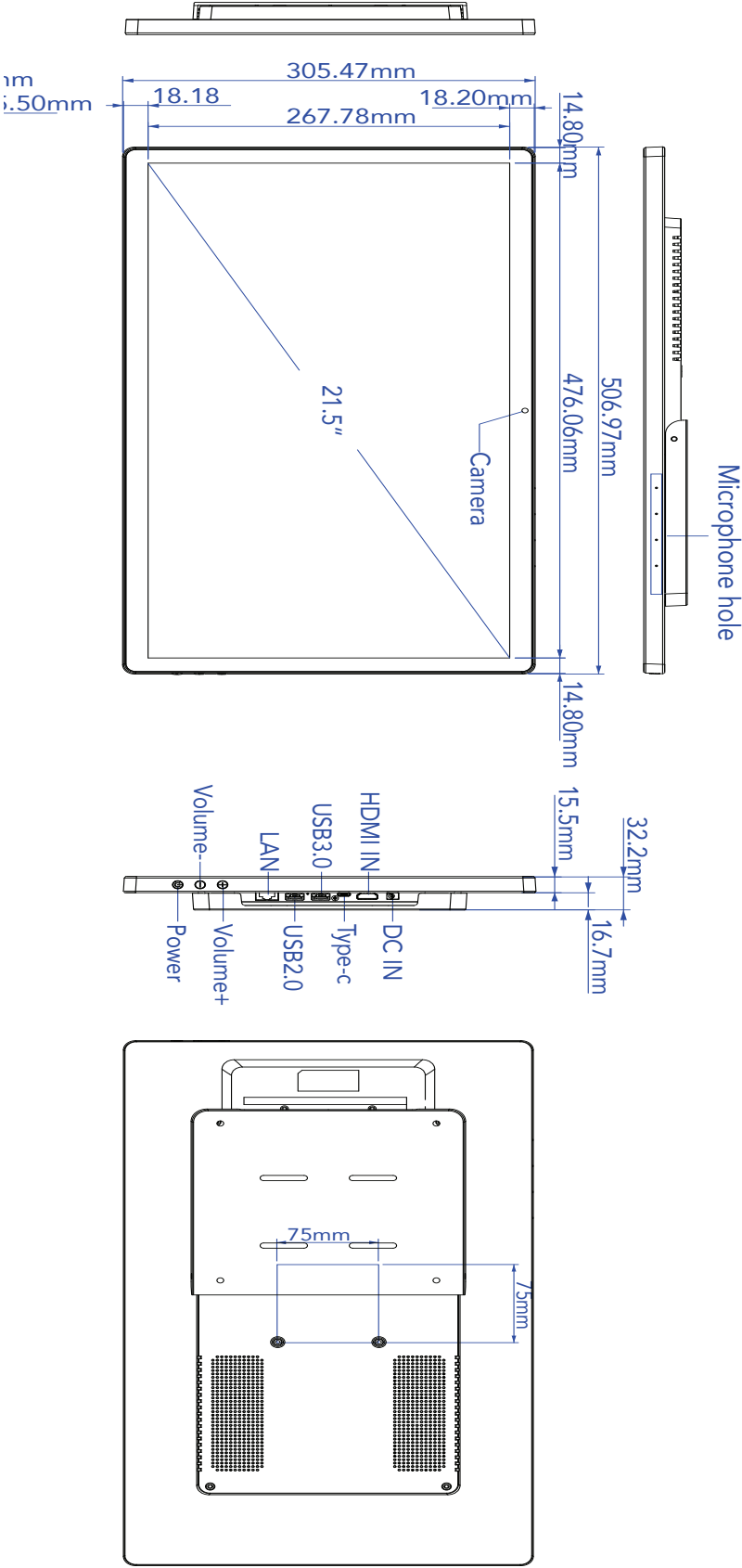


SPECIFICATIONS:

System	CPU	RK3588S2 Quad core cortex A55+Quad core cortex A76
	RAM	4GB
	Internal memory	32GB
	Operation system	Android 13
Display	Panel Size	21.5"LCD
	Panel Type	IPS
	Resolution	1920*1080
	Display Colors	16.7M Colors
	Color Gamut	72% NTSC
	Viewing angle	R/L 89/89, U/D 89/89
	Display mode	Normally black
	Contrast ratio	3000:1
	Response Time	7ms
	Back-light Type	Eled
	Luminance	250cdm2
	Aspect Ratio	,16:9
Touch	Model Type	Capacitive touch screen
	Number of points	10-Point
	Interface for touch	I2C
Network	WiFi	IEEE 802.11b/g/n/a/ac/ax (Wi-Fi 6) with Mu-MIMO standard
	Bluetooth	Bluetooth 5.3
	Ethernet	10M/100M/1000M
Interface	RJ45	Ethernet interface
	USB	USB 2.0 HOST
	USB	USB 3.0 HOST
	Type-C	Full Function (Except for charging function)
	HDMI IN	Support 800*600,1024*768,1280*720,1280*800,1280*1024,1366*768,1600*900,1920*1080,3840*2160, etc
	Power Jack	DC power input
Media plays	Video format	MPEG-1,MPEG-2,MPEG-4,H.265,H.264,VC-1,VP8,VP9,MVC,AV1, etc., support up to 8K@60fps
	Audio format	MP3/WMA/AAC/WAV/OGG, etc
	Photo	JPEG/PNG/GIF,etc
Other	Product Colors	White/Black
	VESA	75mm*75mm
	Button	Power/Vol+/Vol-
	G-sensor	Support
	Speaker	4Q*5W*2
	Microphone	Standard Quad Microphone , Support noise reduction and echo cancellation
		Optional , 13.56MHz, ISO/IEC 18092, ISO/IEC 21481, ISO/IEC 14443 A&B, ISO/IEC 15693, Japanese Industrial Standard (JIS) (X) 6319-4, MIFARE Classic encrypted tags and cards
	NFC	
	Camera	MIPI 8.0MP Camera
	Language	Multi-language
	Certificates	CCC/CE/FCC,Google EDLA
	POE	Optional (IEEE802.3bt, up to 60W)
Working Surrounding	Working Temperature	0℃---40℃
	Storage Temperature	-20℃---60℃
	Working Humidity	20~80%RH
	Storage Humidity	10~95%RH
Accessories	Adapter	12V/3A
	AC Cable	L=1.5m
	User manual	*1
Product Measurement, mm		
Unit (Without packaging)		
L	W	H
N.W(kg)	KG	
Giftbox (With Packaging)		
L	W	H
N.W(kg)		
Carton 2pcs/CTN		
L	W	H
N.W(kg)		
G.W		



DRAWING:

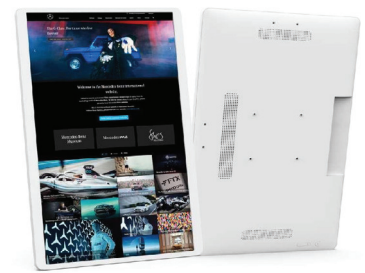


OTHER MODEL TYPES

OPEN FRAME



NARROW BEZEL



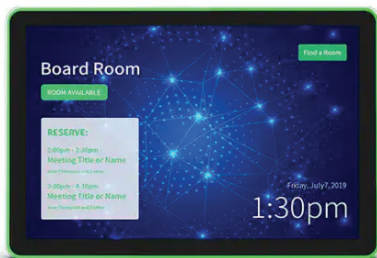
STRETCHED LCD



DESK SHAPE



ROOM BOOKING



HEALTH CARE



FLOOR KIOSK



HANGING LCD

