

PRODUCT SHEET

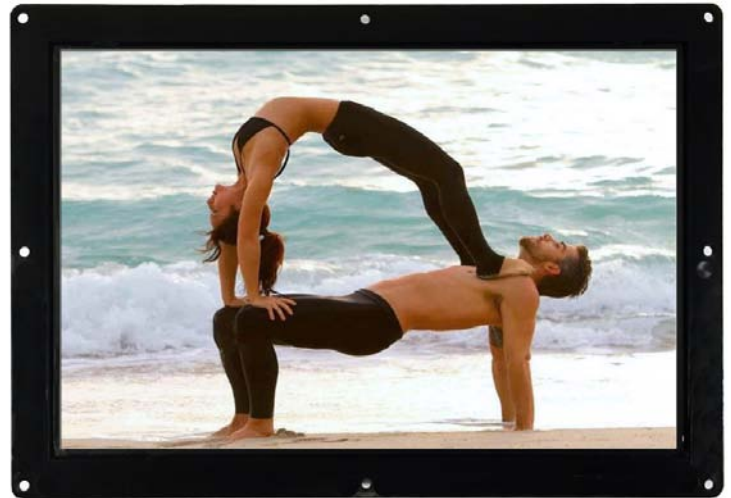
Open Frame Monitor

10.1inch Open Frame Monitor

ArtNr: AC-101OF-HDMI-IPS

MAIN FEATURES:

- Auto Start by plug in power-adapter
- HDMI-input portal
- 10.1inch IPS-LCD panel 1280*800 pixels
- Plastic Housing for built-in purpose
- Thin housing
- Power adapter with 2.5meter cable
- Usage up to 14 hours per day
- Optional:
 - Internal HD video player 1080P
 - VGA-DVI portals
 - Internal Speakers
 - 3.5mm Jack output



MAIN PURPOSE:

- Connect an external player, like a PC computer or media player for f.i. Digital Signage Display /Advertisement Display
- Built-in Shop Displays

USAGE:

This Monitor can be easily used for built-in a display. Just connect the HDMI and play. The mainboard can optionally come with extra in-outputs for interactivity, see the options below.

OPTIONAL: Multi Functions

The mainboard can be turned into a multi-function board, several in-outputs can be added, and software can be made Tailor made. Example features:

- Trigger buttons for selection video / volume combined with LED lighting
- Output for LED lightning 5/12V
- Motion Sensor / Tilt-up light Sensor
- Multiple Audio Outputs for speakers & headphones
- Input Audio for Mobile phone / iPod (auto-sensing)
- Touchscreen



=> find more about the options below in this product sheet.



Next pages:
Additional features
technical specs and drawing

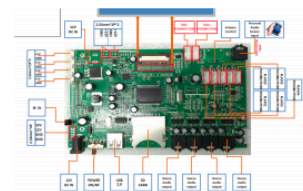
10.1inch Open Frame Monitor

ArtNr: AC-101OF-HDMI-IPS

Additional Features for our MediaScreens with a Multi-Function board

We can add extra features to the Multi-functionboard which are inside some of our Mediascreens. See the features below. Our engineers can develop the function custommade against your needs.

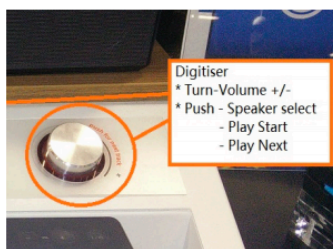
Very usefull for Instore Display Building!



TRIGGER BUTTONS for activate sound / video / volume / light



external press-buttons
+ external cable



external Press and Turn button
+ external cable



capacitive touch buttons + external cables
(can be put under 3mm glass plate)



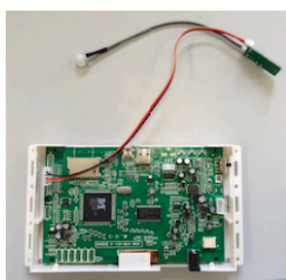
LED Light Pads



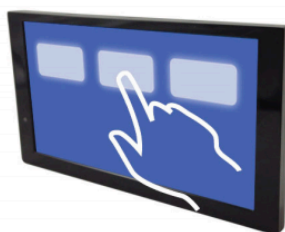
LED Light Strips



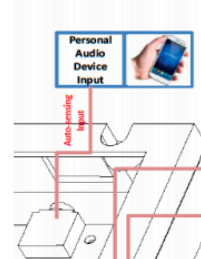
Customized Membrane
press touch pad



Motion sensor



TouchScreen



Input Jack for Mobile Phone Sound



All kind of brackets



External Speakers



External 8D-cell batterybox

Next page: Technical specs & Drawing

10.1inch Open Frame Monitor

ArtNr: AC-101OF-HDMI-IPS

TECHNICAL SPECIFICATIONS

Display	Panel	10.1inch LCD Monitor
	Shell	Open Frame - for built-in purpose
	Resolution	1280*800
	Contrast ratio	500:1
	Brightness	350cdm ²
	Viewing angles:	85/85/85/85(U/D/L/R)
	Aspect Ratio	16:9
Interface	HDMI	HDMI IN portal
	VGA/DVI	VGA (optional) + DVI Input (optional)
	Power Jack	DC 12V/1.5A power input
	Head phone	3.5mm Jack output (optional)
Sound System	Speaker	2x2W/8Ω internal speakers (optional)
Standard Functions	AutoStart	AUTO Start
Optional functions	Trigger Buttons	Push- and Touchbuttons, Press&Turn button
	Sensors	Motion sensor or Lift sensor to activate videos
	Speakers	External Speakers
	Batterybox	8D-Cell Batterybox for battery operated power
	Audio out	Multiple Jacks 3.5 / Coax / Digital Sound
	Jack Input	Jack Input for mobile phone / mp3-player sound
	Software	Software adjustments for your needs
	LED	LED strips, LED light pads
	Output Voltage	(multiple) Output 12V (5V), f.i. for LED lighting
	Touchscreen	Transistive TouchScreen
Others	Accessories:	Power Adapter, (optional Remote Control)
	Color:	Black Housing

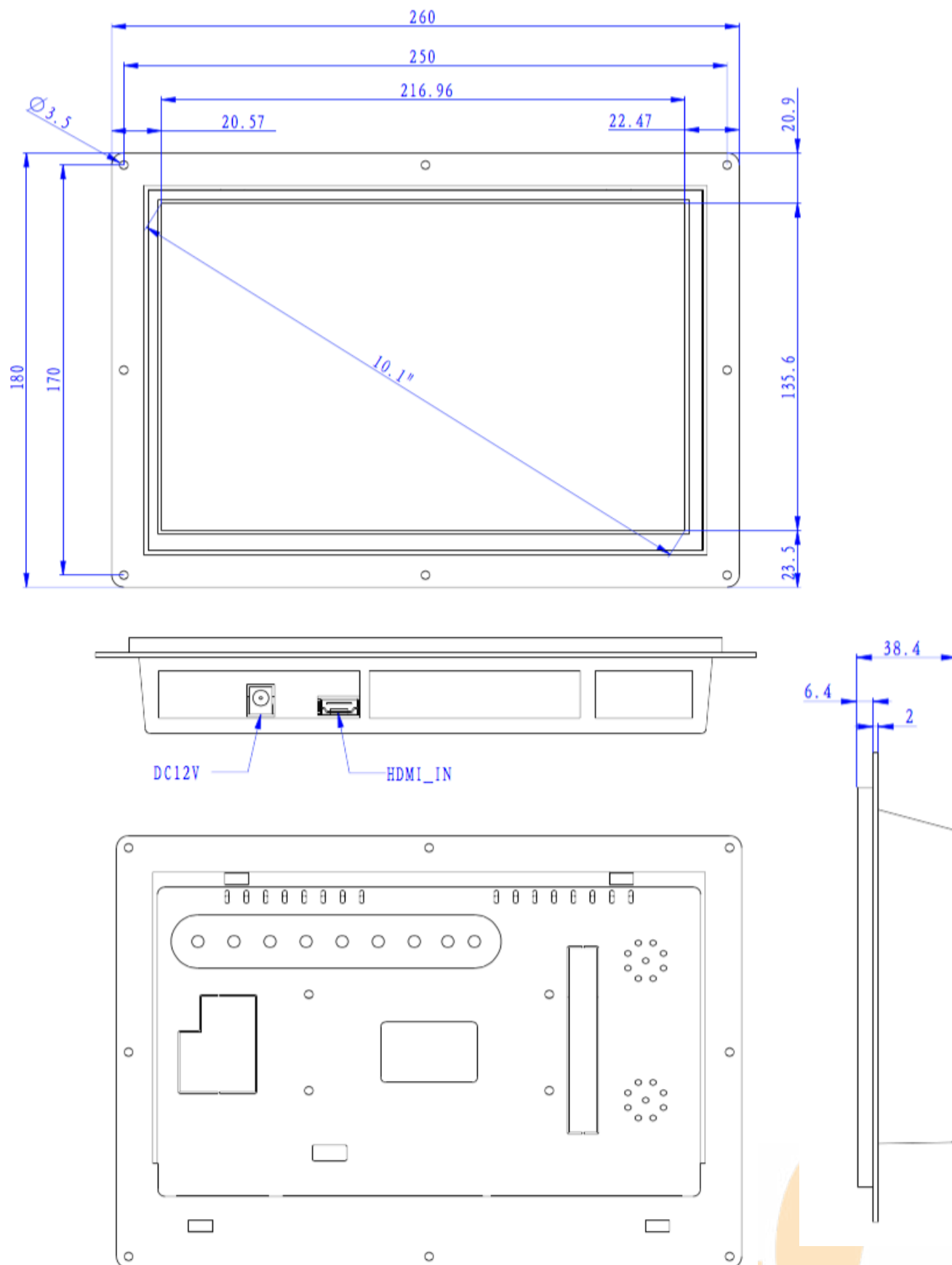
PRODUCT SHEET

Open Frame Monitor

10.1inch Open Frame Monitor

ArtNr: AC-101OF-HDMI-IPS

DRAWING



All rights reserved. Changes to specifications and descriptions may be made at any time without prior notice.